



ncf designs
by
neuchef fashion inc.
CORPORATE WEAR

To Order Place Contact Us at
1.800.NewChef (639.2433) or
Email Sales@NewChef.com



newchef fashion inc.



G. LUCIEN SALAMA
PRESIDENT, CEO



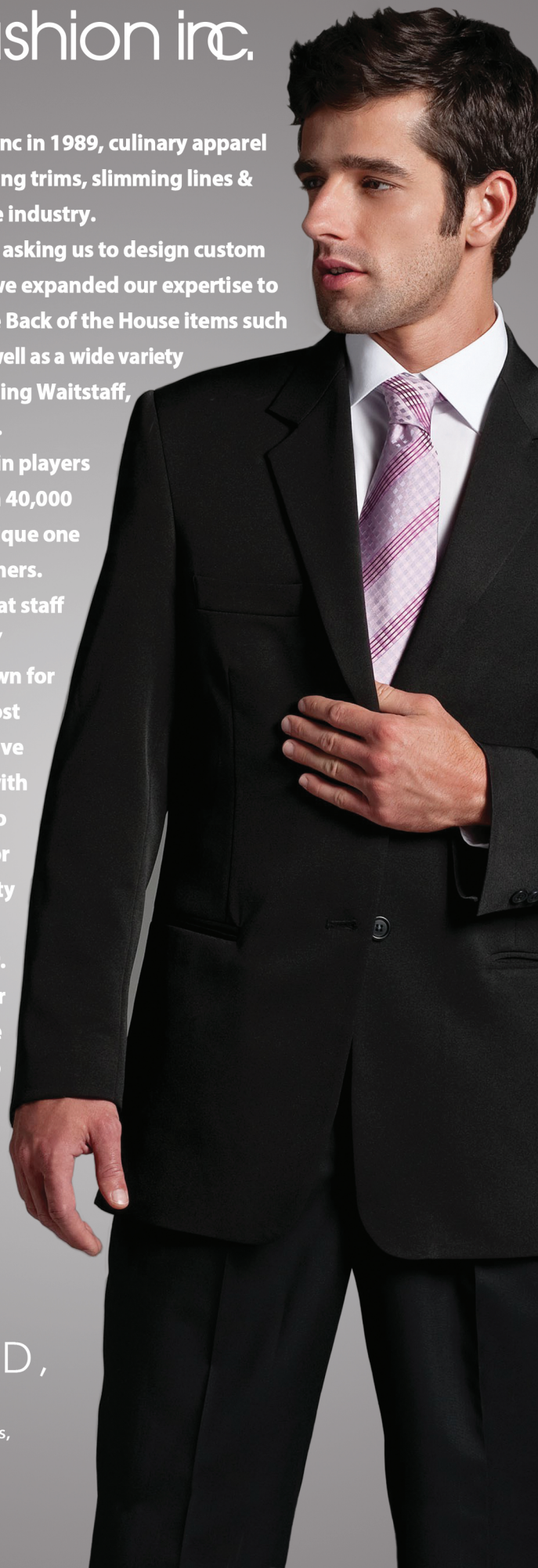
CHANTAL SALAMA
VICE PRESIDENT

When we started NEWCHEF Fashion, Inc in 1989, culinary apparel was drab & unappealing. By introducing trims, slimming lines & elegant fabrics, we revolutionized the industry. Soon, prestigious organizations were asking us to design custom looks for them. Nearly 10 years ago, we expanded our expertise to other areas and started offering more Back of the House items such as Housekeeping, Engineering, etc. as well as a wide variety of Front of the House solutions including Waitstaff, Front Desk, Casinos, Hotels & Resorts. Today, NCF DESIGNS is one of the main players of the Uniform world. With more than 40,000 accounts, we are still offering that unique one on one experience to all of our customers. We know how to listen & we have great staff working together to make our clients' projects happen. Our business is known for our responsiveness, flexibility & utmost quality. Customers come first & we have organized ourselves to provide you with all the help you need. Whether it be to put a new uniform program in place or to just re-order with ease. The hospitality industry strives for quality garments that team members will proudly wear. At NCF we are dedicated to making your experience as professional yet personable as possible. You can depend on us to go well beyond all your expectations.

G. LUCIEN SALAMA
PRESIDENT, CEO

IF YOU LOOK GOOD,
YOU FEEL GOOD,
YOU COOK GOOD,

Thank you for choosing NCF to meet all your culinary apparel needs,
Your satisfaction means everything to us!



4 SUITING

- PG04 Female 3 Button Blazer | Style ED6525
- PG04 Mens 2 Button Blazer | Style ED3525
- PG05 Hampton Blazer | Style J300
- PG05 Avon Jacket | Style L705
- PG06 Ventura Blouse | Style S450
- PG06 Chorlotte Pant | Style P800
- PG06 Female 2 Button Blazer | Style L541
- PG07 Pea Coat | Style C5500
- PG07 3 Button Overcoat | Style HP6200

8 PANTS

- PG08 Male Expandable Waist Pant | Style PMBK2
- PG08 Female Expandable Waist Pant | Style PFBK1
- PG09 Male Flat Front Pant | Style F101
- PG09 Female Flat Front Extended Button Pant | Style P601
- PG10 Male Flat Front Pants | Style ED2525
- PG10 Female Flat Front Pants | Style ED8525
- PG10 Female Dress Skirt | Style ED9725

11 VESTS

- PG11 Female Fly Front Vest | Style V1215
- PG11 Male Fly Front Vest | Style V1214
- PG12 Male High Button Vest | Style V1001
- PG12 Female High Button Vest | Style V1003
- PG13 Dayton Vest | Style V2200
- PG13 Cleveland Vest | Style V2300
- PG14 Tapered Back 3 Button Vest | Style HP22
- PG14 Sierra Blouse | Style J30

15 TOPS

- PG15 San Fran Dress | Style D810
- PG15 Shar Dress | Style D620
- PG16 Ventura Blouse | Style S450
- PG16 Manhattan Blouse | Style S662
- PG17 Aurora Blouse | Style S510
- PG17 Flat Front Extended Button Pants | Style P601
- PG18 Manhattan Blouse | Style S662
- PG18 Chicago Skirt | Style S770
- PG18 Alasso Pant | Style P977

19 POLOS

- PG18 Women's Performance Polo | Style RG1005
- PG18 Male Performance Polo | Style RG1001



newchef fashion inc.



FEMALE 3 BUTTON BLAZER | Style ED6525

Princess seams and two front/back darts for shape, narrow lapel, notched collar, two front in-set pockets, one inside pocket.

Fabric: 100% Polyester (Washable)

Colors: Navy, Black & Steel Grey

MENS 2 BUTTON BLAZER | Style ED3525

Narrow lapel, notched collar, welt breast pocket, two front in-set pockets with flaps, two inside pocket, center back vent.

Fabric: 100% Polyester (Washable)

Colors: Navy, Black & Steel Grey



HAMPTON BLAZER | Style J300

A modern fitted blazer with softer narrow notch lapels, Two button front, double back vent, four button sleeve placket, inside double welt pocket.



AVON JACKET | Style L705

A contemporary Hi-Low styling, notch lapel, 4 button closure, fully lined, front and back princess seams, 2-piece sleeves, angled single welt breast pocket.



VENTURA BLOUSE | Style S450

An elegant, draped inset cowl neck, long sleeves, band at sleeves and hem. Sits at the hip.

CHORLOTTE PANT | Style P800

Narrow waistband, slim leg styling, front scoop pockets, fitted through the hip and thigh.

FEMALE 2 BUTTON BLAZER | Style L541

Left chest single welt pocket, stitch along notch lapel and pocket flaps, fully lined, two lower double welt pockets with flaps, two button front.





PEA COAT | Style C5500

Below waist, double breasted. Welt slanted pockets, long sleeve, with epaulets at shoulder, with peak lapel. Custom Melton wool.



3 BUTTON OVERCOAT | Style HP6200

A fashionable tailored piece. 3/4 length, 3 button front with center back vent. Two inside double-besom pockets, front flaps, and back flanges for ease of movement and comfort



FEMALE EXPANDABLE WAIST PANT | Style PFBK1
 Flat front, 2 pockets, invisible through pocket elastic expansion, belt loops.



MALE EXPANDABLE WAIST PANT | Style PMBK2
 Flat front, 2 pockets, 2 double welt back pockets, invisible through pocket elastic expansion, belt loops.



MALE FLAT FRONT PANT | Style F101

Two front and back pockets, curtain waistband, reinforced bartacking for durability, hook and eye closure with brass zipper.



FEMALE FLAT FRONT EXTENDED BUTTON PANT | Style P601

Right side watch pocket, back right side pocket, extended tab two button closure.



FEMALE FLAT FRONT PANTS | Style ED8525

Mid-rise pant sits below the natural waist, straight fit with hook & eye closure, nylon zipper & two pockets.

FEMALE DRESS SKIRT | Style ED9725

Lightweight washable dress skirt with smooth hand & exceptional style, drop waistline, back nylon zipper closure & back dart tail, no pockets, rear kick pleat & fully lined.



MALE FLAT FRONT PANTS | Style ED2525

Lightweight washable dress pant with smooth hand & exceptional style, classic dress pants has straight fit, hook & eye closure, nylon zipper & two front/back pockets.

FEMALE FLY FRONT VEST | Style V1215

Fly front pocket, five button front, two lower single-welt lower pockets, front darts, fully lined.

Fabric: 54% Poly / 44% Wool / 2% Spandex

Colors: Black, Grey, Charcoal, Navy

MALE FLY FRONT VEST | Style V1214

Fly front placket, two single-welt lower pockets, front darts, fully lined.

Fabric: 54% Poly / 44% Wool / 2% Spandex

Colors: Black, Grey, Charcoal, Navy



MALE HIGH BUTTON VEST | Style V1001
5 Button, fully lined, 2 front single welt front pockets.

FEMALE HIGH BUTTON VEST | Style V1003
Front darts, 5 Button, fully lined, 2 front single welt pockets.



DAYTON VEST | Style V2200

Male inverted notch lapel, 4 button closure, fully lined, front darts, angled single welt pockets.

CLEVELAND VEST | Style V2300

Female inverted notch lapel, 4 button closure, fully lined, front and back princess seams, angled single welt pockets.





TAPERED BACK 3 BUTTON VEST | Style HP22
V-neck three button vest, princess seam with pockets at front, center back seam and princess seams . Made to order.



SIERRA BLOUSE | Style J30
Feminine front pleat detail with buttoned placket. Split neckline with banded collar, comfortable silhouette with 3/4 length sleeves and button sleeve tab. Made to order.



SAN FRAN DRESS | Style D810

Body-hugging silhouette. V-neck with contour waistband panel. Lower back pleat detail with invisible zipper and back vent. Made to order.



SHAR DRESS | Style D620

A fun and flirty design with a U-Neck sleeveless styling. Shaped panel dress, flared skirt with bottom band detail, exposed center back zipper. Made to order.



VENTURA BLOUSE | Style S450

Elegant, comfort fit, straight leg design, curved inside waistband, zip front closure, two slanted front pockets, back darts, Made to order.



MANHATTAN BLOUSE | Style S662

Fitted split neckline blouse. Banded collar, narrow through the bust, fitted at the waist and hip. Short sleeves with band, round hem.

AURORA BLOUSE | Style S510

Band collar blouse with delicate front ruffles. Functional center front placket, contrast binding on neckline and sleeves. Made to order.



**FLAT FRONT EXTENDED
BUTTON PANTS | Style P601**

Right side watch pocket, back right side pocket, extended tab two button closure.





MANHATTAN BLOUSE | Style S662

Fitted split neckline blouse. Banded collar, narrow through the bust, fitted at the waist and hip. Short sleeves with band, round hem.



CHICAGO SKIRT | Style S770

Polished contour panels with flare bias bottom detail. Wide contour waistband, Invisible side zipper. Made to order.



ALASSO PANT | Style P977

Elegant, comfort fit, straight leg design, curved invisible waistband, zip front closure, two slanted front pockets, back darts. Made to order.

WOMEN'S PERFORMANCE POLO | Style RG1005

100% Polyester, moisture-wicking, anti-microbial, UPF 25 protection short sleeve polos with ribbed no curl collar. In stock in red, royal, graphite, black, and white.



**MALE PERFORMANCE POLO
Style RG1001**

100% Polyester, moisture-wicking, anti-microbial, UPF 25 protection short sleeve polos with ribbed no curl collar. In stock in red, royal, graphite, black, and white.



**ADDITIONAL
POLO COLORS:**



ncf designs
by
newchef fashion inc.
CORPORATE WEAR



To Order Place Contact Us at
1.800.NewChef (639.2433) or
Email Sales@NewChef.com